

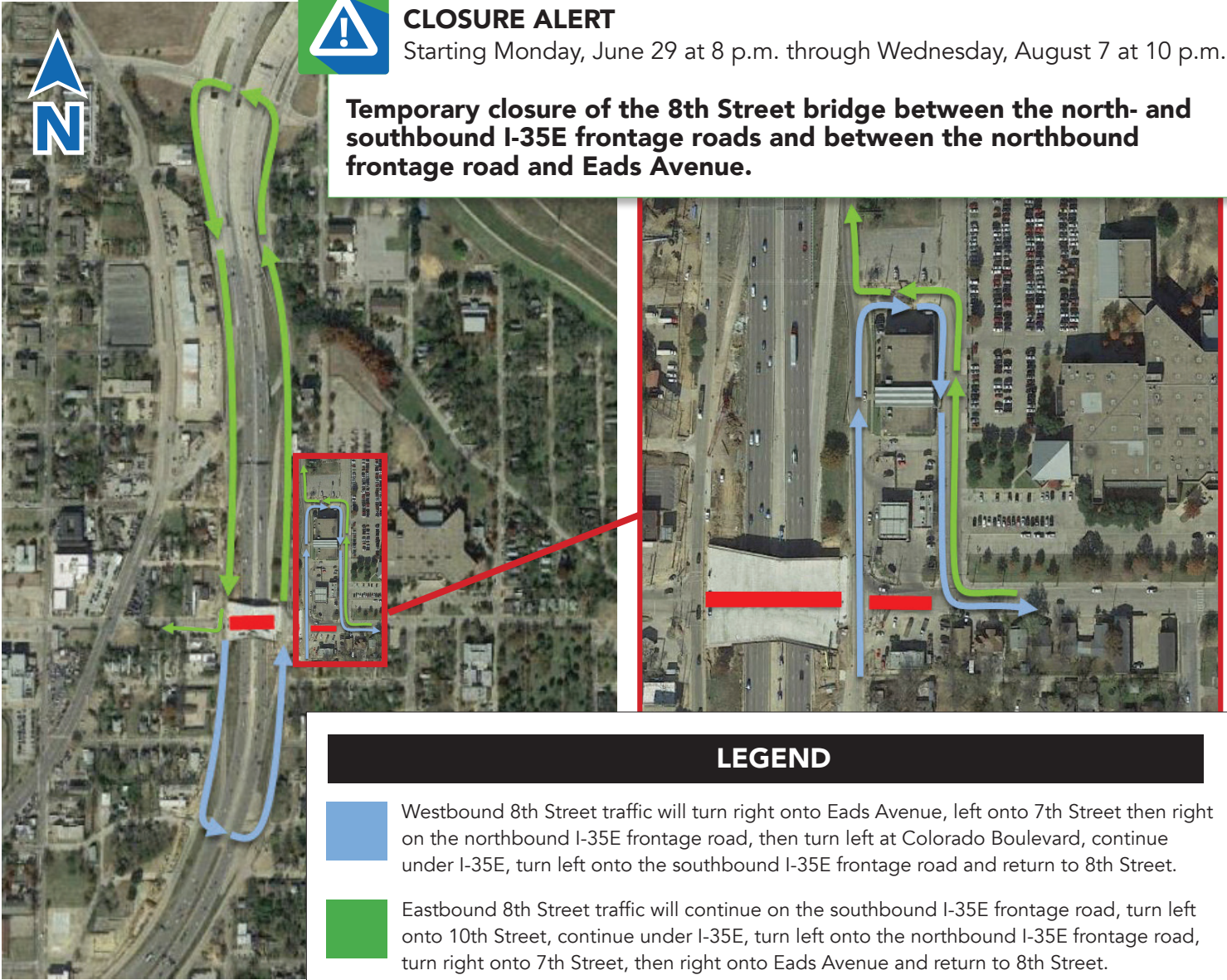
Temporary Closure of 8th Street



CLOSURE ALERT

Starting Monday, June 29 at 8 p.m. through Wednesday, August 7 at 10 p.m.

Temporary closure of the 8th Street bridge between the north- and southbound I-35E frontage roads and between the northbound frontage road and Eads Avenue.



LEGEND



Westbound 8th Street traffic will turn right onto Eads Avenue, left onto 7th Street then right on the northbound I-35E frontage road, then turn left at Colorado Boulevard, continue under I-35E, turn left onto the southbound I-35E frontage road and return to 8th Street.



Eastbound 8th Street traffic will continue on the southbound I-35E frontage road, turn left onto 10th Street, continue under I-35E, turn left onto the northbound I-35E frontage road, turn right onto 7th Street, then right onto Eads Avenue and return to 8th Street.

Project Hotline: 214-349-6493
Email: info@thesoutherngateway.org
Website: thesoutherngateway.org

